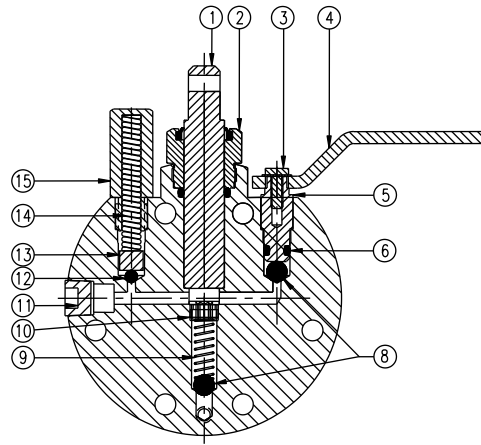
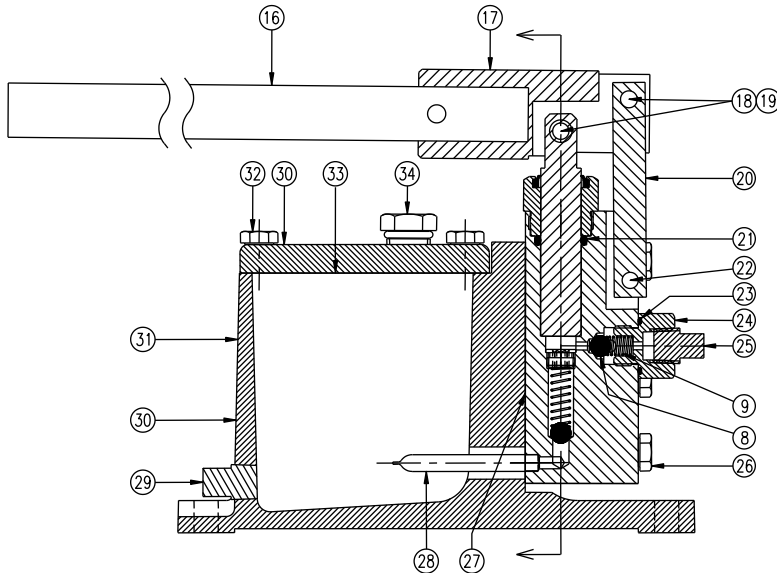


PARTS LIST for model HP46982ALS



REPAIR KIT TO REBUILD VALVE BLOCK ASSEMBLY HP75359SL - Includes items – 1, 2, 6, 8, 12, 21, 23, 27, 28, 33

See maintenance manual MM-HP001 for complete rebuilding instructions

No.	Description	Req.	Material	Part No.	No.	Description	Req.	Material	Part No.
1	Piston	1	303 Stainless	75233SL	19	E-Clip	2	Coated Steel	9Q4733A
2	Bushing/Wiper	1	Brass/Polyurethane	75239BR	20	Link	1	303 Stainless	75234SL
3	Release Handle Screw	1	304 Stainless	9Q4170	21	Piston Seal	1	Buna-N	17946BN
4	Pressure Release Handle	1	304 Stainless	75145SL	22	Pin	1	303 Stainless	9Q4950
5	Release Stem	1	304 Stainless	75236SL	23	Outlet O-ring	1	Buna-N	75584BN
6	Release Stem Seal	1	Buna-N	75254BN	24	Outlet	1	Brass	75583BR
8	Ø.313 Ball	3	440 Stainless	9Z8505	25	1/4" NPT Pipe Plug	1	Plastic	9Z6145
9	Ball Spring	2	302 Stainless	75255SL	26	Valve Block Cap Screw	6	304 Stainless	9Q5975
10	Spring Retainer	1	Brass	75298BR	27	Head Gasket	1	Non-Asbestos	75244NA
11	Auxiliary Outlet Plug	1	Brass	9V4925	28	Filter Screen	1	304 Stainless	75148SL
12	Ø.188 Ball	1	440 Stainless	9Z8507	29	Drain Plug	1	Brass	9V4914
13	Bypass Plug	1	304 Stainless	75237SL	30	Reservoir & Cover	1	Aluminum E-Coat	47042ALEY
14	Bypass Spring	1	17-7PH Stainless	75256SL	31	Priming Instructions	1	Vinyl	9Z4022
15	Bypass Cap	1	Brass	75238BR	32	Cover Cap Screw	4	304 Stainless	9Q5861
16	Handle	1	Galv. Steel	HP19165-01	33	Cover Gasket	1	Cork Neoprene	75245NA
17	Beam	1	E-Coat Aluminum	75240ALEY	34	Vent Plug	1	Brass/Viton	75242BR
18	Clevis Pin	2	Zinc Plated Steel	9Q4733	35	Prop 65 Label	1	SG Paper	9Z4042

NOTE: Most hydraulic failures can be attributed to the presence of dirt or foreign materials in the hydraulic system. It is imperative that all components are cleaned, and that only new, clean fluid is used in the reservoir. Be sure that all fittings and lines are clean and free from dirt and debris.

PUMP FILLING AND PRIMING INSTRUCTIONS:

- Pumps are shipped without fluid and must be filled and primed before use.
- Fluid must be compatible with pump and valve seals and meet the customer's specification for temperature range.
- Remove vent plug (34) and fill pump to within 1/4" of cover plate (30) with fluid.
- Loosen pressure release handle (4) and pump at least 10 full strokes to prime pump.

- Pause briefly at the bottom of each down stroke to allow air to bleed out of valve block (7).
- Recheck fluid level and reinstall vent plug (34).
- If pump fails to prime, follow these steps:
 - Ensure top of pump is clean, & free of dirt & debris.
 - Remove e-clip (19) and clevis pin (18) on top of stem (1).
 - Pull stem (1) out and fill stem cavity with the same fluid in reservoir (30).
 - Reinstall stem (1), clevis pin (18) and e-clip (19).
 - Loosen pressure release handle (4) and pump at least 10 full strokes.

VERTICAL MOUNTING INSTRUCTIONS:

- Swap drain plug (29) and vent plug (34) locations.
- Mount pump with outlet end down.

WARNING: Use only genuine Betts replacement parts. Substitute parts will void all warranties and could impair the proper function making this equipment unsafe.



Designed, engineered and manufactured in the USA.

February 2025
Section 35 Page 3E