

### TRIDENT COMBINATION VENT

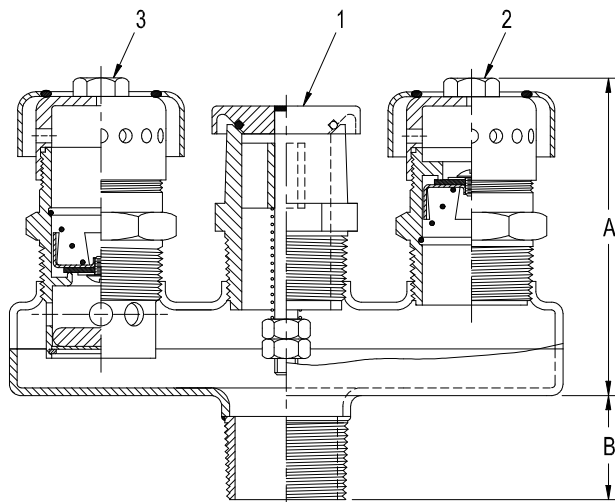
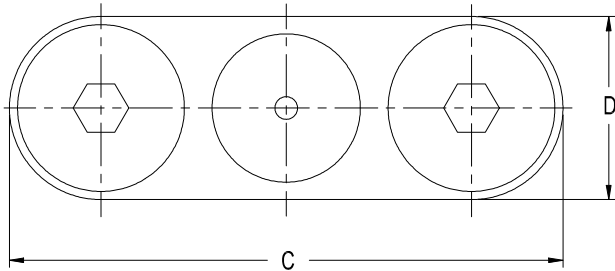
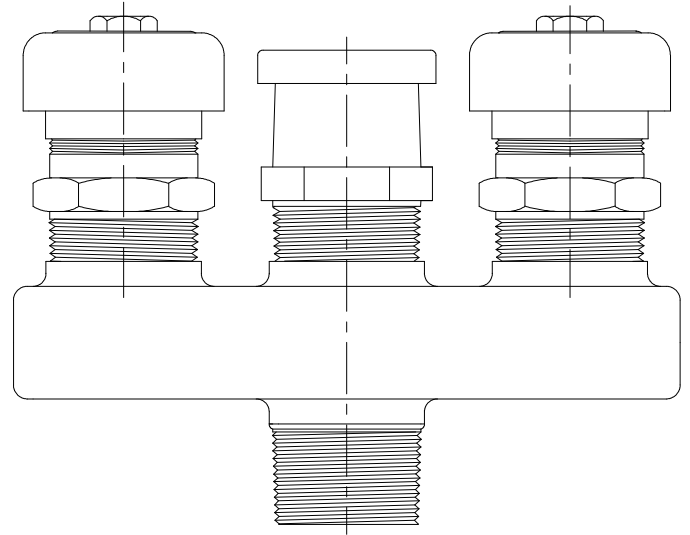
The Trident provides three-way venting plus overturn protection. It is designed to provide the pressure-actuated emergency venting plus inbreathing (vacuum) and Outbreathing (pressure). The Trident can be disassembled for cleaning. The pressure-actuated emergency venting has been flow tested and marked in accordance with D.O.T. MC306 Para. 178.341-4 N.F.P.A. 385 Para. 2263, and N.F.P.A. 407 Para. 616.

	Thru Area	Capacity
Inbreathing Vent	0.44 sq. in.	1750 cu. ft. hr. @ 1 psig.
Outbreathing Vent	0.44 sq. in.	3285 cu. ft. hr. @ 3 psig.

Pressure Actuated Emergency Venting  
Rated Capacity @ 5 PSIG - 10,000 Cu. Ft. Hr.

Note: To provide a proper load on disc, spring should be loaded to a length of  $1\frac{5}{8}$  inches.

Vent Assembly	Body	Seat	Wt.	Part No.
Aluminum with Stainless	Aluminum	Viton	2.0	6131ALV
Stainless 316	Stainless		4.5	6131SSV



### Part List

No.	Description	Material	Part No.	Thread
1	Emergency Vent	Alum.	3338ALV	$1\frac{1}{4}$ NPT Right Hand
		Stnls 316	3338SSV	
2	Inbreathing Vent	Alum.	3435ALV	$1\frac{1}{4}$ NPT Right Hand
		Stnls 316	3435SSV	
3	Outbreathing Vent	Alum.	3436ALV	$1\frac{1}{4}$ NPT Left Hand
		Stnls 316	3436SSV	

### Dimensions

Thread	A	B	C	D
$1\frac{1}{4}$ NPT R.H.	$4\frac{1}{8}$	$1\frac{3}{8}$	$7\frac{7}{16}$	$2\frac{1}{2}$