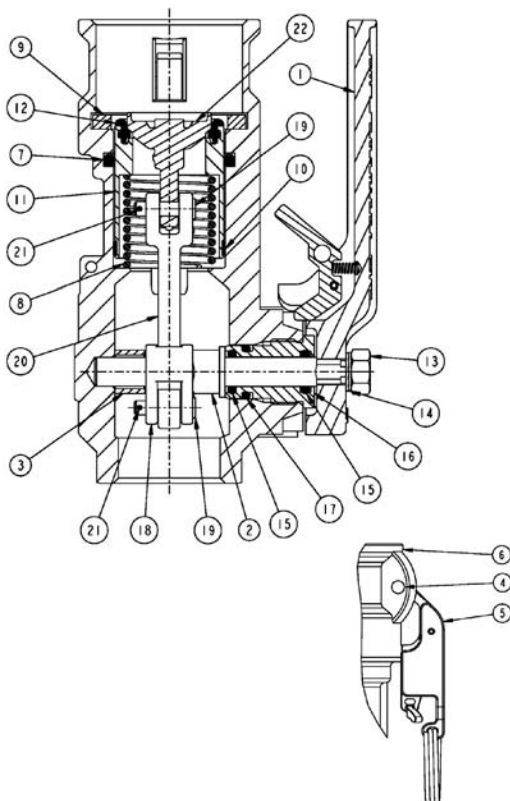


Materials	Aluminum (250° F/121° C Max Temp)	SST (see seal chart)
Body, Poppet	A356-T6 ASTM B-26	ASTM A351 CF3M 316L SST
Cam Arms	ASTM A351 CF8M 316 SST	ASTM A351 CF8M 316 SST
Seal Cylinder	6061-T6	A351 CD4MCU Duplex SST
Shaft	ASTM A479 Ferralium 255 SST	ASTM A479 Ferralium 255 SST
Seals	See Chart	See Chart
Poppet Link	A351 CD4MCU Duplex SST	A351 CD4MCU Duplex SST
Shaft Link	A351 CD4MCU Duplex SST	A351 CD4MCU Duplex SST

Seal Options / Kits	Mat'l	1 1/2"	2"	3"	Temperature Rating
Buna-N	AL	1711RKL-0015	1711RKL-0020	1711RKL-0030	-20° F – 212° F
	SST	1771RKL-0015	1771RKL-0020	1771RKL-0030	(-29° C – 100° C)
Fluorocarbon	AL	1712RKL-0015	1712RKL-0020	1712RKL-0030	-20° F – 400° F
	SST	1772RKL-0015	1772RKL-0020	1772RKL-0030	(-29° C – 204° C)
PTFE	AL	1713RKL-0015	1713RKL-0020	1713RKL-0030	-15° F – 400° F
	SST	1773RKL-0015	1773RKL-0020	1773RKL-0030	(-26° C – 204° C)
EPDM	AL	1714RKL-0015	1714RKL-0020	1714RKL-0030	-50° F – 250° F
	SST	1774RKL-0015	1774RKL-0020	1774RKL-0030	(-46° C – 121° C)

PART NUMBERS



#	Description	Qty	1-1/2"	2"	3"	RK
1	LEVER ASSEMBLY	1	H32040	H32040	H32040	
2	SHAFT	1	C21119RE	C21123RE	C21112RE	
3	SPACER	1	H32031RE	H32030RE	H32032RE	
4	GROOVE PIN, CAM ARM	2	H20141M	H20141M	H20144M	
5	AUTOLOK™ ARM ASSEMBLY	1	733ARK-SS20	733ARK-SS20	733ARK-SS30-PADDLE	
6	BODY	1	C21120A (EW)	C21128A (EW)	C21113A (EW)	
7	O-RING, MAIN SEAL	1	See Seal Options	See Seal Options	See Seal Options	+
8	SPRING	1	H06128M	H04328M	H10352M	
9	GASKET	1	See Seal Options	See Seal Options	See Seal Options	+
10	GUIDE, SEAL CYLINDER	1	H31539M	H31540M	H31541M	+
11	SEAL CYLINDER	1	H31542A (EW)	H31543A (EW)	H31544A (EW)	+
12	NOSE SEAL	1	See Seal Options	See Seal Options	See Seal Options	+
13	NUT, SHAFT	1	H32111M	H32111M	H32111M	
14	LOCK WASHER, SHAFT	1	H31920M	H31920M	H31920M	
15	O-RING, SHAFT	2	See Seal Options	See Seal Options	See Seal Options	+
16	STUFFINGBOX	1	C20812RE	C20812RE	C20812RE	
17	O-RING, STUFFINGBOX	1	See Seal Options	See Seal Options	See Seal Options	+
18	SHAFT LINK	1	9C21118EW	9C21125EW	9C21111EW	
19	CLEVIS PIN	2	H31692M	H31692M	H31688M	
20	POPPET LINK	1	9C21117EW	9C21124EW	9C21110EW	
21	COTTER PIN	2	H04981M	H04981M	H04981M	+
22	POPPET	1	C21121A (EW)	C21129A (EW)	C21115A (EW)	
23*	GUIDEBEARING	1	N/A	N/A	H32118M	+

NOTE: (EW) Replaces A for SST Fittings
 *NOTE: Not shown

+ Items included in repair kits

IMPORTANT: OPW products should be used in compliance with applicable federal, state, provincial, and local laws and regulations. Product selection should be based on physical specifications and limitations and compatibility with the environment and materials to be handled. OPW MAKES NO WARRANTY OF FITNESS FOR A PARTICULAR USE. All illustrations and specifications in this literature are based on the latest product information available at the time of publication. OPW reserves the right to make changes at any time in prices, materials, specifications and models and to discontinue models without notice or obligation.

SEALS

1 1/2"	O-Ring, Main Seal	Gasket	Nose Seal	O-Ring, Shaft	O-Ring, Stuffingbox
Buna-N	H03051M	H20544M	H31527M	H20129M	H31705M
Fluorocarbon	H03070M	H00973M	H31530M	H20175M	H31706M
PTFE	H20184M	H07904M	H31536M	H20522M	H31708M
EPDM	H03596M	H20536M	H31533M	H20176M	H31707M
Chemraz®	H20688M	H20687M	H31536M	H20522M	H31708M

2"	O-Ring, Main Seal	Gasket	Nose Seal	O-Ring, Shaft	O-Ring, Stuffingbox
Buna-N	H06223M	H20545M	H31528M	H20129M	H31705M
Fluorocarbon	H01076M	H00974M	H31531M	H20175M	H31706M
PTFE	H20185M	H07905M	H31537M	H20522M	H31708M
EPDM	H06142M	H20537M	H31534M	H20176M	H31707M
Chemraz®	H20552M	H20624M	H31537M	H20522M	H31708M

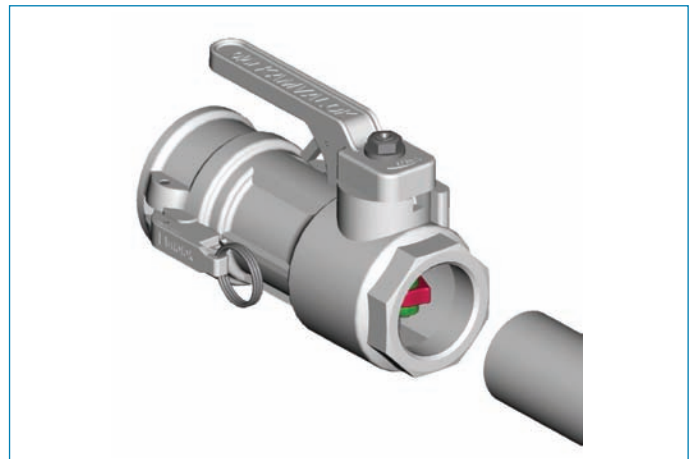
3"	O-Ring, Main Seal	Gasket	Nose Seal	O-Ring, Shaft	O-Ring, Stuffingbox
Buna-N	H05152M	H20265M	H31529M	H20129M	H31705M
Fluorocarbon	H05136M	H20131M	H31532M	H20175M	H31706M
PTFE	H20186M	H31562M	H31538M	H20522M	H31708M
EPDM	H10209M	H20266M	H31535M	H20176M	H31707M
Chemraz®	H20715M	H20714M	H31538M	H20522M	H31708M

INSTALLATION PREPARATIONS



WARNING: Read & understand these instructions before starting installation or dismantling:

- Coupler to be used for its designated purpose only
- Local regulations for (un)loading must be followed at all times
- Product flow may result in static electricity; grounding of equipment is required
- OPW instructions must be followed for installation or dismantling at all times
- Make sure to use adequate personal protection at all times during operation
- Secure whatever device coupler will be mounted to (e.g. loading arm, hose, etc.)
- Thread coupler onto pipe (use proper thread sealant)



MAINTENANCE



ATTENTION: The same risks and procedures of initial installation apply.

Consider the following when servicing the coupler:

- When coupler is over pressurized, it must be inspected thoroughly
- After maintenance is performed, it must be tested before the next use (see Testing After Servicing)
- Periodic inspection (every 3 months) for leakages (especially with toxic or hazardous mediums)
- Maintenance must be performed by authorized personnel
- Periodic maintenance (once a year) is required according to the maintenance instructions
- In case of (parts of) couplers being redirected, the initiator must provide information about the mediums, which have been in contact with (parts of) the coupler
- During maintenance, (partial) dismantling could be necessary; the same risks and procedures apply