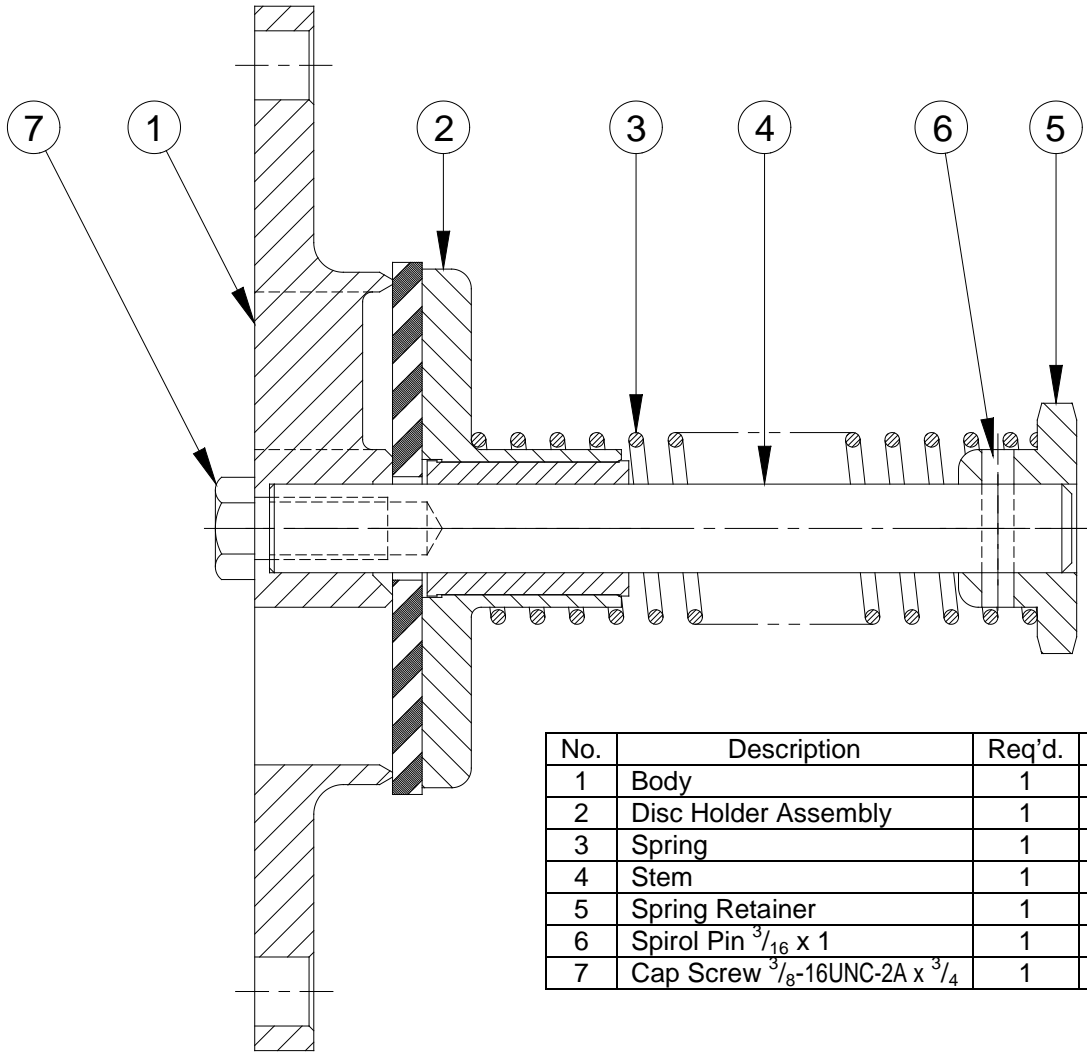


# PARTS LIST

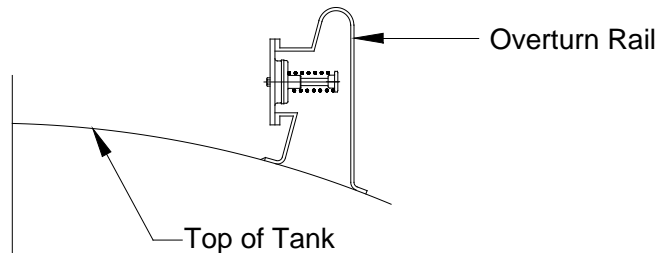
# VAPOR SYSTEM VENT



| No. | Description  | Req'd. | Material         | Part No. |
|-----|--|--------|------------------|----------|
| 1   | Body   | 1      | Aluminum         | 26381AL  |
| 2   | Disc Holder Assembly                                   | 1      | Alum/Buna-N      | 17209AB  |
| 3   | Spring   | 1      | Steel "E" Coated | 17192EY  |
| 4   | Stem   | 1      | Stainless        | 17205SL  |
| 5   | Spring Retainer  | 1      | Aluminum         | 17051AL  |
| 6   | Spirol Pin $\frac{3}{16} \times 1$                     | 1      | Stainless        | 9Q5901   |
| 7   | Cap Screw $\frac{3}{8}$ -16UNC-2A $\times \frac{3}{4}$ | 1      | Stainless        | 9Q5884   |

## INSTALLATION

Vent is designed to bolt to a standard 4" TTMA outlet flange. A minimum  $4\frac{3}{8}$ " I.D. should be provided to allow sufficient venting area between the O.D. of disc holder and I.D. of mounting. Care should be taken to provide adequate space for the spring end of the vent.



NOTE: The above is not intended to be a recommendation that overturn rails be used for conduits in vapor recovery system or that vent must be mounted as shown. It merely shows one type of mounting to illustrate that clearance is needed for the spring end of vent to insure proper operation.

WARNING Use only genuine Betts Industries Inc. replacement parts. Use of substitute parts can impair the proper functioning of the Vent.