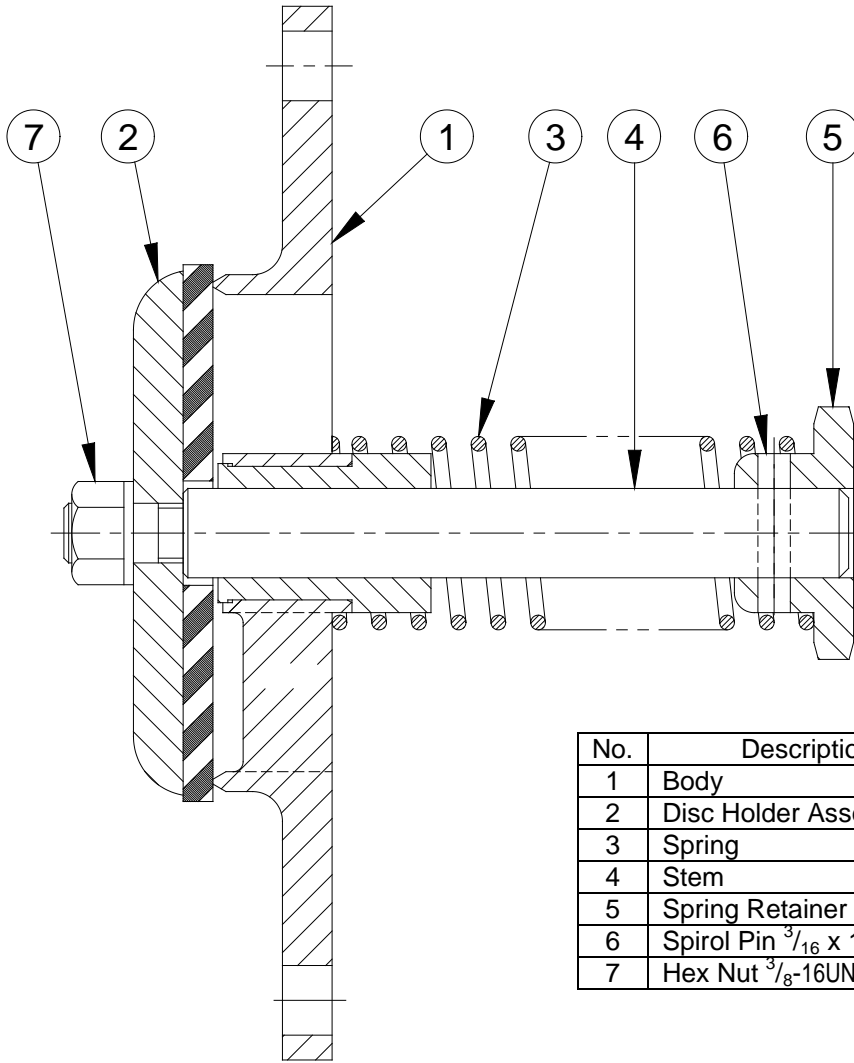


PARTS LIST

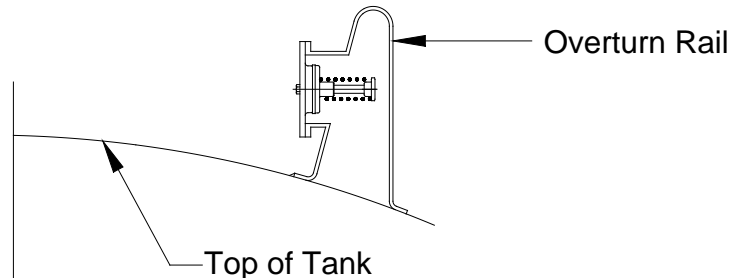
VAPOR SYSTEM VENT



No.	Description	Req'd.	Material	Part No.
1	Body	1	Aluminum	26382AL
2	Disc Holder Assembly	1	Alum/Buna-N	17210AB
3	Spring	1	Steel "E" Coated	17192EY
4	Stem	1	Stainless	17204SL
5	Spring Retainer	1	Aluminum	17051AL
6	Spirol Pin $\frac{3}{16} \times 1$	1	Stainless	9Q5901
7	Hex Nut $\frac{3}{8}$ -16UNC-2A Thd.	1	Stainless	9Q5809

INSTALLATION

Vent is designed to bolt to a standard 4" TTMA outlet flange. Care should be taken to provide adequate space for the spring end of the vent.



NOTE: The above is not intended to be a recommendation that overturn rails be used for conduits in vapor recovery system or that vent must be mounted as shown. It merely shows one type of mounting to illustrate that clearance is needed for the spring end of vent to insure proper operation.

WARNING Use only genuine Betts Industries Inc. replacement parts. Use of substitute parts can impair the proper functioning of the Vent.